

DEVELOP

Dynamic balance

www.develop.eu



ineo 6136/6120



- > B/W SRA3+ digital press
- > Up to 7,940 A4 pages per hour

Features that make all the difference!

Print market, in-house printers and graphic communications providers have to focus on building up their business by producing a wider range of high-volume jobs more efficiently. For that, they need the best performance available in the market: The ineo 6136 series comprises two models, the fastest of which provides a maximum speed of 7,940 A4 pages per hour. Latest technologies guarantee maximum uptime and outstanding black and white print quality. The superior product outline impresses with a comprehensive range of inline finishing options.

Durable performance

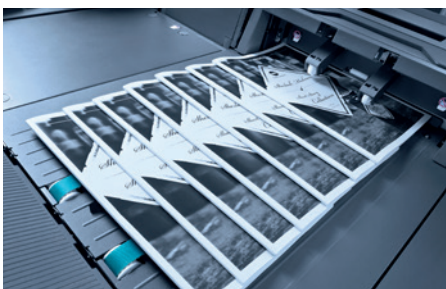
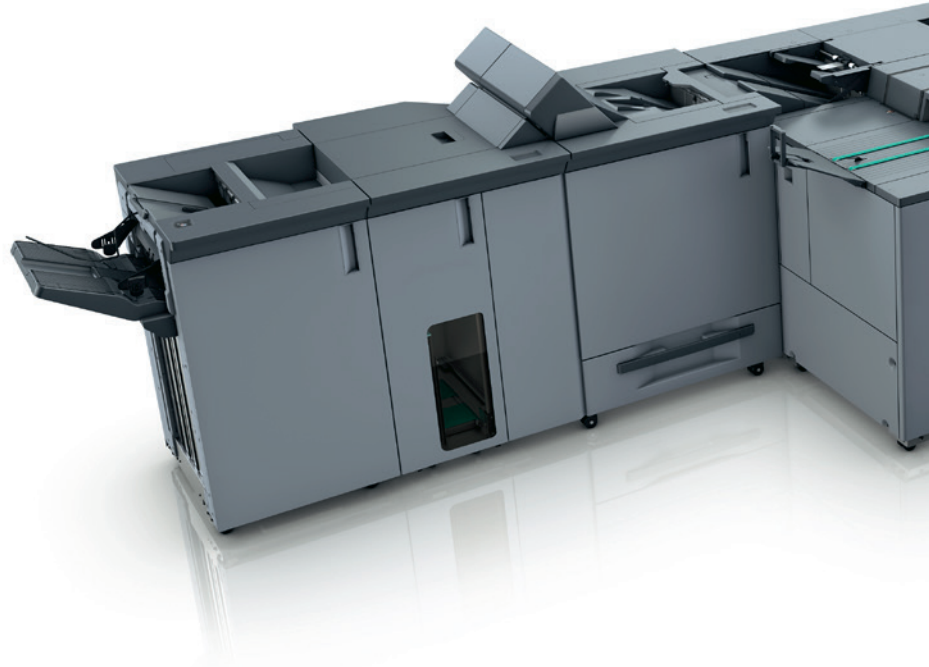
- > ineo 6136
 - > Up to 136 A4 pages per minute
 - > Up to 74 SRA3 pages per minute
 - > Up to 7,940 A4 pages per hour
 - > Up to 4,274 SRA3 pages per hour
- > ineo 6120
 - > Up to 120 A4 pages per minute
 - > Up to 66 SRA3 pages per minute
 - > Up to 7,034 A4 pages per hour
 - > Up to 3,846 SRA3 pages per hour

Highest reliability

- > Long-life platform, long-lasting parts and consumables
- > Optimum registration results via ICCU
- > Belt transfer system
- > For prints with maximum efficiency
- > For lucrative short-run printing

Ready-made print products

- > 50-sheet booklet making with front trimming and optional creasing, slitting and spine corner forming
- > 102-sheet auto ring binding
- > Perfect binding for books of up to 30 mm
- > 100-sheet stapling with cutting mechanism
- > For highest automation and enormous productivity
- > For more profit in the printroom



Geared-up finishing

- > Multi (GBC) punching and 2- & 4-hole punching
- > 6 different types of folding
- > Interface for 3rd parties
- > Large stacking
- > Minimised human interaction
- > For optimised budgets

3rd party finishing

- > Plockmatic SD-500/SD-350 booklet maker with square fold
- > GBC Punch G2 for heavy duty punching
- > For higher flexibility
- > For more sophisticated print products

High-end print control

- > Proprietary ineo controller
- > For intuitive operation
- > Saves time and money



Ease of use

- > Simple paper catalogue settings
- > Easy-to-follow on-screen instructions
- > Operator Replaceable Unit Management (ORUM)
- > For maximum ease of operation
- > Frees operators for more important jobs

Sophisticated media handling

- > Air-suction or air-assist feeding technology
- > Up to 18,000-sheet paper input capacity or 14,000-sheet paper input and 5,000-sheet post insertion
- > Up to 11 paper input trays
- > For enhanced overall productivity
- > For extreme cost savings

Comprehensive media processing

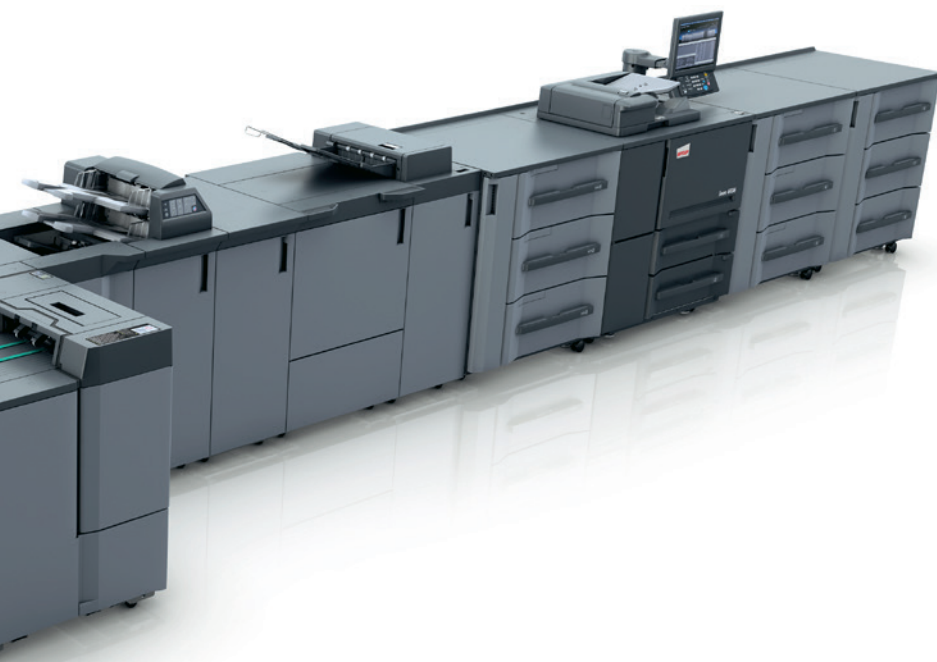
- > Up to 350 gsm paper weight in simplex & 300 gsm duplex printing
- > Skew Detection System to prevent paper skew
- > Professional feeding of coated media and envelopes
- > Mechanical decurling as standard
- > Optional inter-cooler curl eliminator
- > For highly flexible print products
- > Stands out from the competition

Environmental awareness

- > Green procurement policy
- > ISO 14001-certified
- > For reduced environmental impact

Perfect image quality

- > 1,200 x 1,200 dpi resolution
- > Tone Curve Utility
- > HD toner technology
- > Image density control technology
- > For new print applications
- > For growing your business



Technical specifications

System specifications

Resolution	1,200 x 1,200 dpi
Paper weight	40–350 gsm
Duplex unit	Non-stack type; 40–300 gsm
Paper sizes	Min.: 95 x 139 mm Max.: 324 x 483 mm (with PF-710)
Maximum image area	314 x 483 mm (with PF-710)
Paper input capacity	Standard: 3,000 sheets Max.: 18,000 sheets
Paper output capacity	Max.: 15,000 sheets (plus sub trays)
Main unit dimensions (W x D x H)	990 x 910 x 1,454 mm
Main unit weight	396 kg

Productivity

ineo 6136	
A4 - max. per minute	136 ppm
A3 - max. per minute	78 ppm
SRA3 - max. per minute	74 ppm
A4 - max. per hour	7,940 pph
A3 - max. per hour	4,526 pph
SRA3 - max. per hour	4,274 pph

ineo 6120	
A4 - max. per minute	120 ppm
A3 - max. per minute	70 ppm
SRA3 - max. per minute	66 ppm
A4 - max. per hour	7,034 pph
A3 - max. per hour	4,072 pph
SRA3 - max. per hour	3,846 pph

Controller

Embedded ineo Controller

Scanner specifications

Scan speed A4	Up to 240 ppm
Scan resolution	600 x 600 dpi
Scan modes	TWAIN scan; Scan-to-HDD; Scan-to-FTP; Scan-to-SMB; Scan-to-eMail
Scan formats	TIFF/PDF/Encrypted PDF/XPS/Compact PDF/JPEG

Copier specifications

Gradations	256 gradations
FCOT	Less than 2.6 sec. (A4 LEF)
Magnification	25–400%, in 0,1% steps
Multiple copies	1–9,999

Accessories

Integrated Color Care unit	IQ-501
Air assist paper feed unit	PF-709
Pre-printed paper feed kit for PF-709	PP-701
Air suction paper feed unit	PF-710
Heating unit for PF-710	HT-506
Post Insertion unit	PI-PFU
Relay unit	RU-518
Humidification unit	HM-103
Multi (GBC) punching unit	GP-501
Relay unit	RU-510
Auto ring binding unit	GP-502
Folding and punching unit	FD-503
Stacking unit	LS-506
Booklet making unit	SD-506
Booklet making unit	SD-513
Creasing unit for SD-513	CR-101
Slitting unit for SD-513	TU-503
Spine corner forming unit for SD-513	FD-504
Perfect binding unit	PB-503
Stapling unit	FS-532
Saddle stitch kit for FS-532	SD-510
Punch kit for FS-532	PK-522
Post inserter for FS-532	PI-502
Open Stacker	OT-510
Envelop fuser	EF-105
Mount kit for 3rd party	MK-737
Removable HDD Kit	RH-101 & HD-511
Plockmatic	SD-500/SD-350

GBC Punch G2

DEVELOP

Konica Minolta Business Solutions Europe GmbH
Europaallee 17 30855 Langenhagen Germany Phone +49 511 7404-0 www.develop.eu

- All specifications refer to A4-size paper of 80 g/m² quality.
- The support and availability of the listed specifications and functionalities varies depending on operating systems, applications and network protocols as well as network and system configurations.
- The stated life expectancy of each consumable is based on specific operating conditions such as page coverage for a particular page size (5% coverage of A4). The actual life of each consumable will vary depending on use and other printing variables including page coverage, page size, media type, continuous or intermittent printing, ambient temperature and humidity.
- Specifications and accessories are based on the information available at the time of printing and are subject to change without notice.
- DEVELOP and ineo are registered trademarks/product titles owned by Konica Minolta Business Solutions Europe GmbH.
- Konica Minolta does not warrant that any specifications mentioned will be error-free.
- All brand and product names may be registered trademarks or trademarks of their respective holders and are hereby acknowledged.